

Healthwatch Central Bedfordshire

Terms of Reference for the Learning Disability Community Partnerships Group (CPG)

What is the Community Partnership Group?

- ✓ The **CPG** is a group that works together.
- ✓ We want to make things better for people with **learning disabilities**.



- ✓ We listen to people with learning disabilities, their families and carers.

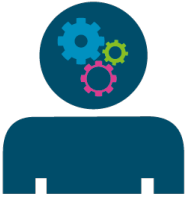
What is the CPG for?

The CPG helps to:

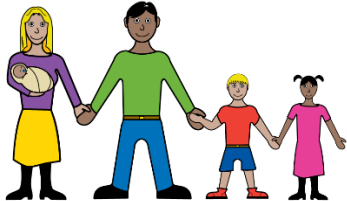
- Make life better for people with learning disabilities.
- Help services work well together.
- Make sure everyone is treated fairly and with respect.
- Support people to speak up and be heard.



Who is on the Board?



✓ People with learning disabilities.



✓ Family carers.

Staff from:



• Health services (NHS)



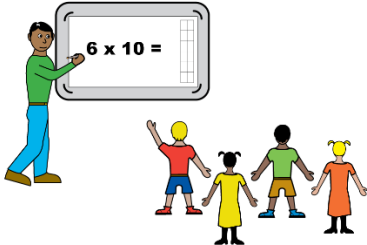
• Social care



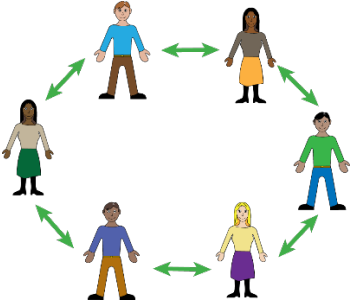
• Local council



- Housing



- Education



- Charities and groups



✓ Everyone is **equal**.



✓ Everyone's voice is **important**.

🗨️ **What do we talk about?**

We talk about:



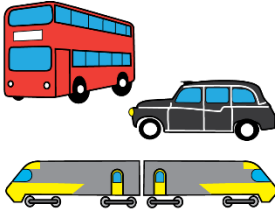
- Health and hospitals



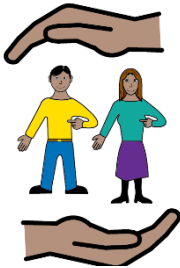
- Housing



- Jobs and training



- Transport



- Staying safe

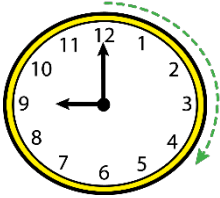


- Having a good life

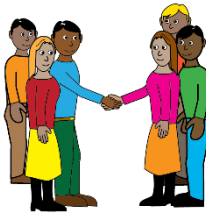
 **When do we meet?**



✓ We meet **twice a year**.



✓ Meetings usually last a maximum of **2 hours**.

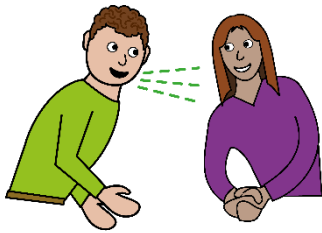


✓ We agree the **date and time** together.

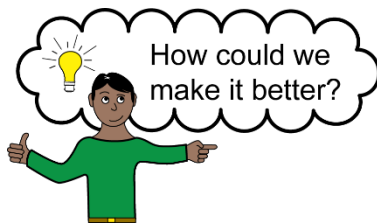
 **What happens at meetings?**



- We share **updates** and **news**.



- We **listen** to each other.



- We make **plans** to improve services.



- We agree **actions** and who will do them.



- We send **easy-read papers** before the meeting.

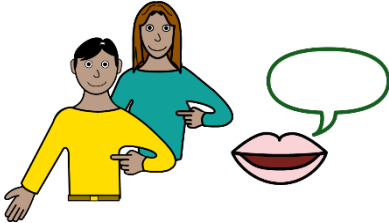
 **How do we include everyone?**



- Use **easy-read documents**.



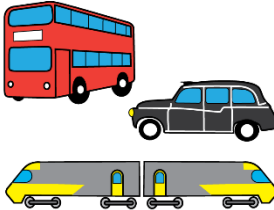
- Use **plain language**.



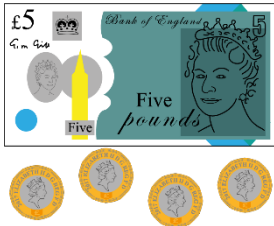
- Support people to **speak up**.



- Give time to **talk** and **ask questions**.



- Help with **travel** or **communication** if needed.



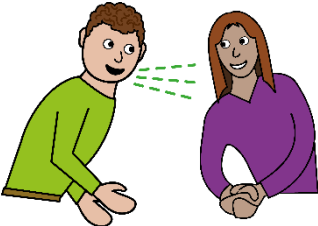
- **Travel expenses** for service users and carers to attend meetings will be paid by Healthwatch Central Bedfordshire.

✓ What do members agree to do?

All members will:



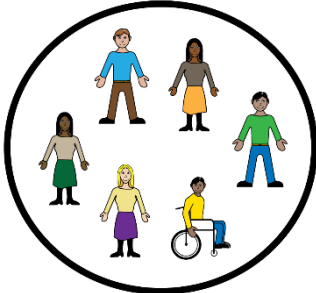
- Be **kind** and **respectful**.



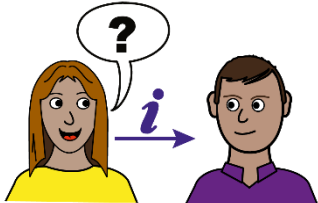
- **Listen** to others.



- Be **on time** and **prepared**.

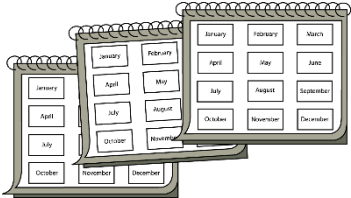


- **Work as a team**.

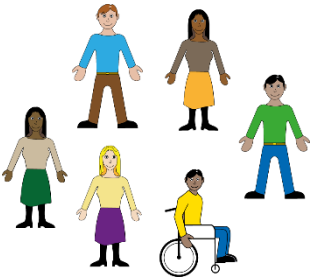


- **Share information**.

 **Reviewing this document**



✓ We will check these Terms of Reference **every year.**



✓ We want to make sure they still **work well for everyone.**